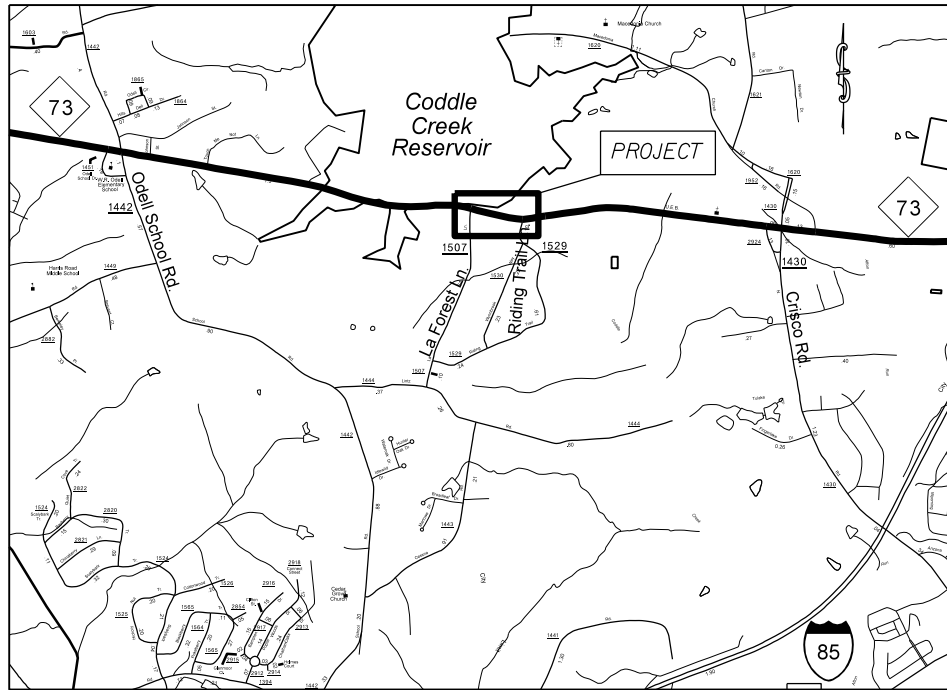


PROJECT: 45340.3.10 TIP: W-5210J



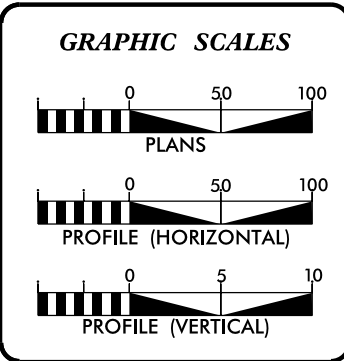
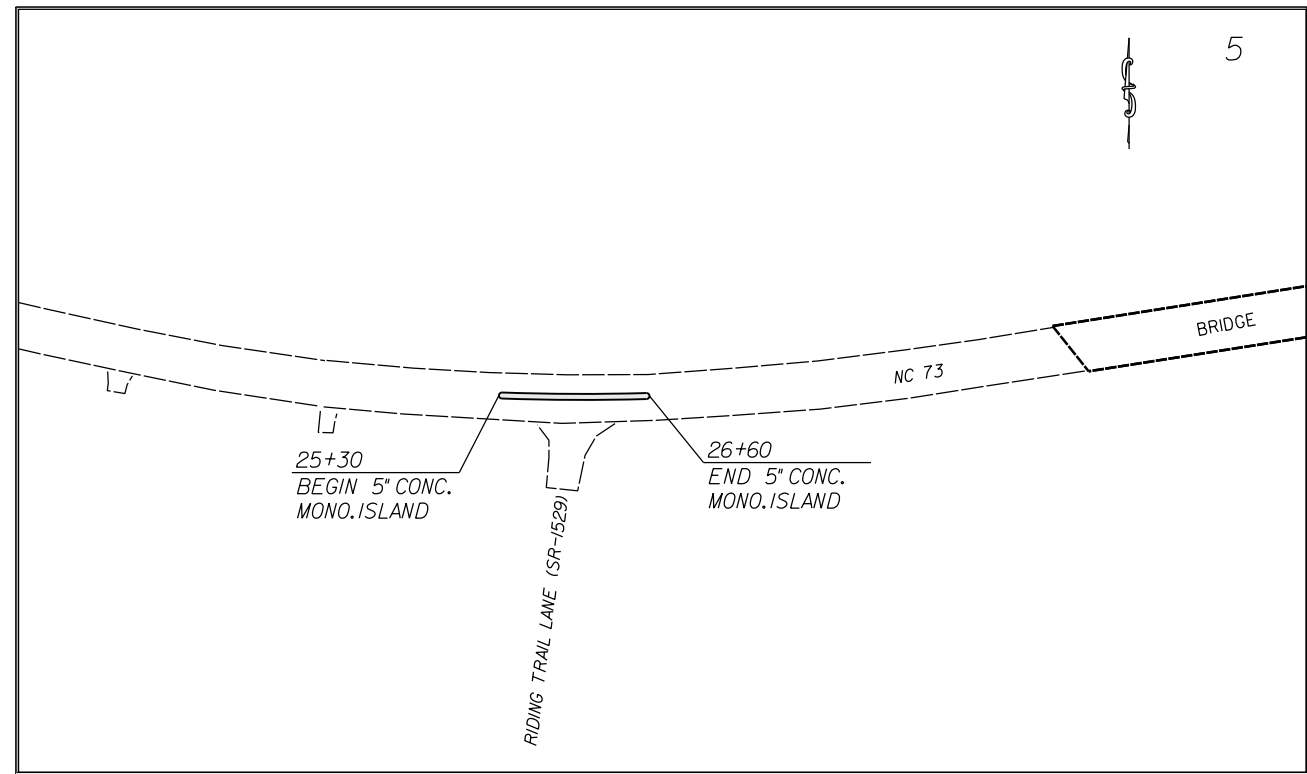
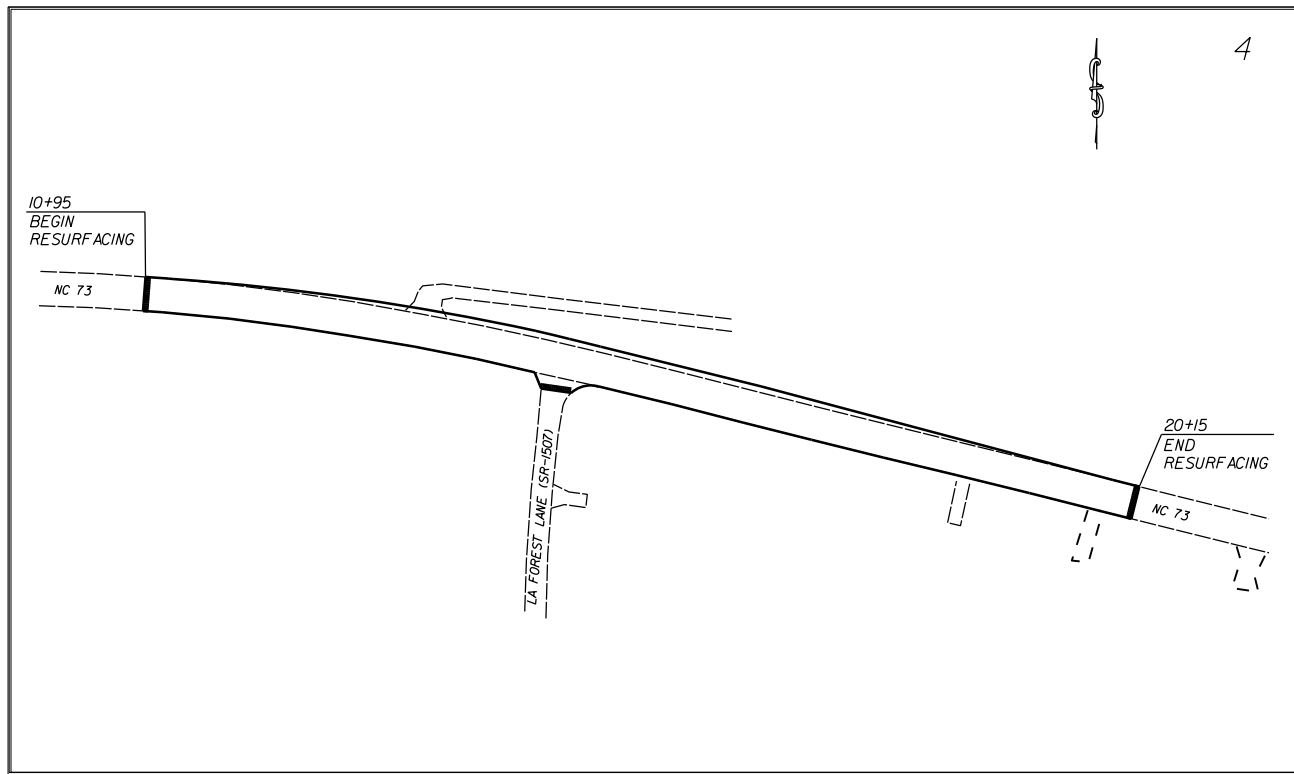
VICINITY MAP NOT TO SCALE

STATE OF NORTH CAROLINA
DIVISION OF HIGHWAYS
CABARRUS COUNTY

LOCATION: INTERSECTION OF NC 73 & LA FOREST LN. (SR-1507) AND
NC 73 & RIDING TRAIL LN. (SR-1529)

TYPE OF WORK: GRADING, PAVING, DRAINAGE, CONCRETE MONOLITHIC ISLAND, AND
THERMOPLASTIC PAVEMENT MARKINGS.

STATE	STATE PROJECT REFERENCE NO.	SHEET NO.	TOTAL SHEETS
N.C.	45340.3.10	1	
STATE PROJ. NO.	P.A. PROJ. NO.	DESCRIPTION	
45340.1.FR10	HSIP-0073(35)	P.E.	
45340.2.FR10	HSIP-0073(35)	R/W	
45340.3.10	HSIP-0073(35)	CONST.	



DESIGN DATA

ADT	=	
ADT	=	
DHV	=	%
D	=	%
T	=	%
V	=	MPH

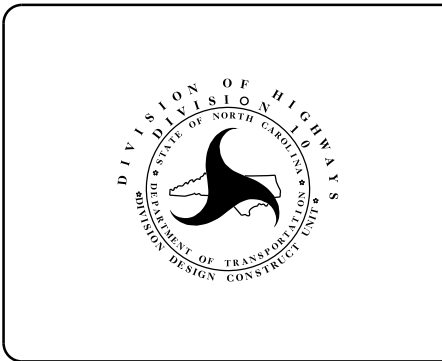
PROJECT LENGTH

LENGTH OF ROADWAY PROJECT 45340.3.FR10	=	0.19	MILES
TOTAL LENGTH OF STATE PROJECT 45340.3.FR10	=	0.19	MILES

Prepared in the Office of:
DIVISION OF HIGHWAYS
DIVISION TEN
DIVISION DESIGN / CONSTRUCT UNIT

2012 STANDARD SPECIFICATIONS

RIGHT OF WAY DATE: _____	RANDY BOWERS PROJECT ENGINEER
LETTING DATE: SEPTEMBER 9, 2015	DONALD HARWARD PROJECT DESIGN ENGINEER

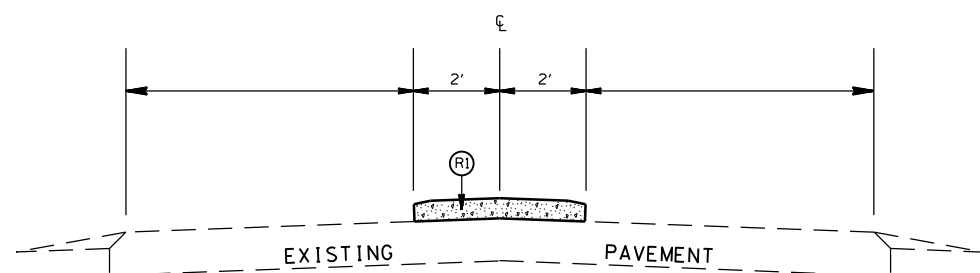


DIVISION OF HIGHWAYS
STATE OF NORTH CAROLINA

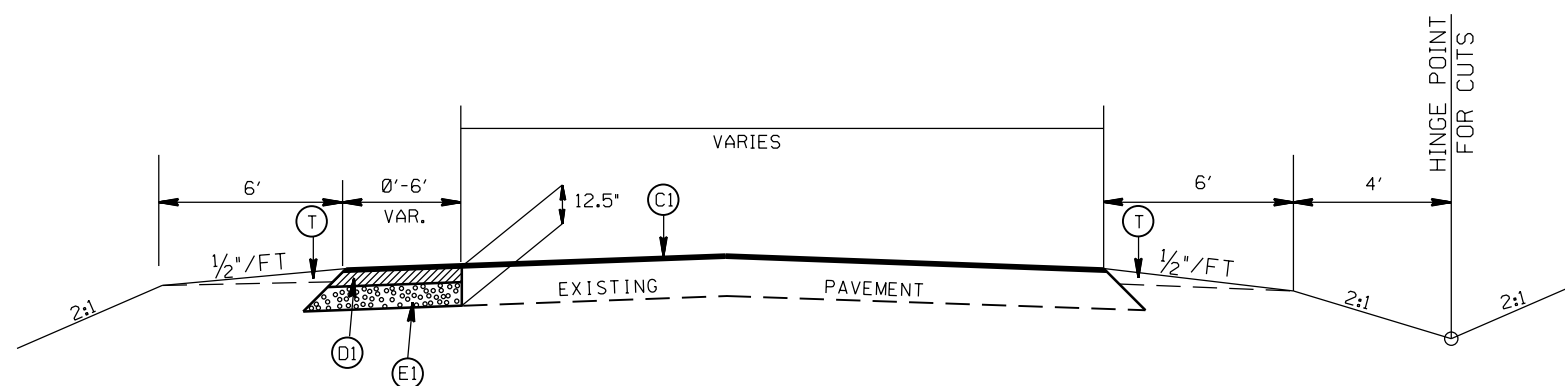
DocuSigned by:
Randy Bowers 8/18/2015

52A4A66079864B2...
APPROVED BY
DDC ENGINEER DATE

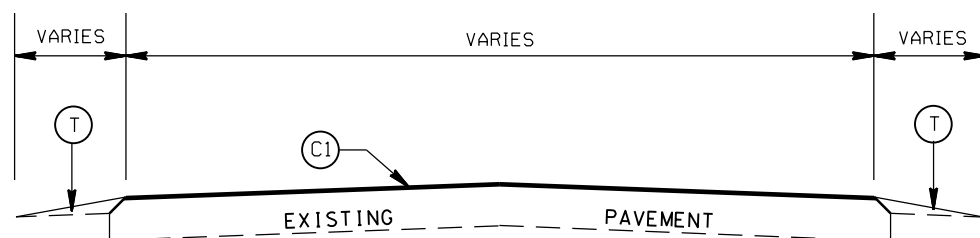
STATE	PROJECT NO.	SHEET NO.	TOTAL SHEETS
N.C.	45340.310	2	
F.A. PROJECT NO.			



TYPICAL SECTION NO. 3
STA. 25+45 TO 26+45 -L-



TYPICAL SECTION NO. 2
STA. 11+20 TO 19+90 -L-



TYPICAL SECTION NO. 1
STA. 10+95 TO 11+20 -L-
STA. 19+90 TO 20+15 -L-

PAVEMENT SCHEDULE

(C1)	PROP. APPROX. 1½" ASPHALT CONC. SURFACE COURSE, TYPE S9.5C, AT AN AVERAGE RATE OF 168 LBS. PER SQ. YD.
(D1)	PROP. APPROX. 3" ASPHALT CONC. INTERMEDIATE COURSE, TYPE I19.0C, AT AN AVERAGE RATE OF 342 LBS. PER SQ. YD.
(E1)	PROP. APPROX. 8.0" ASPHALT CONC. BASE COURSE, TYPE B25.0C, AT AN AVERAGE RATE OF 456 LBS. PER SQ. YD. IN EACH OF TWO LAYERS.
(R1)	PROP. 5" MONOLITHIC ISLAND (SURFACE MOUNTED)
(T)	EARTH MATERIAL

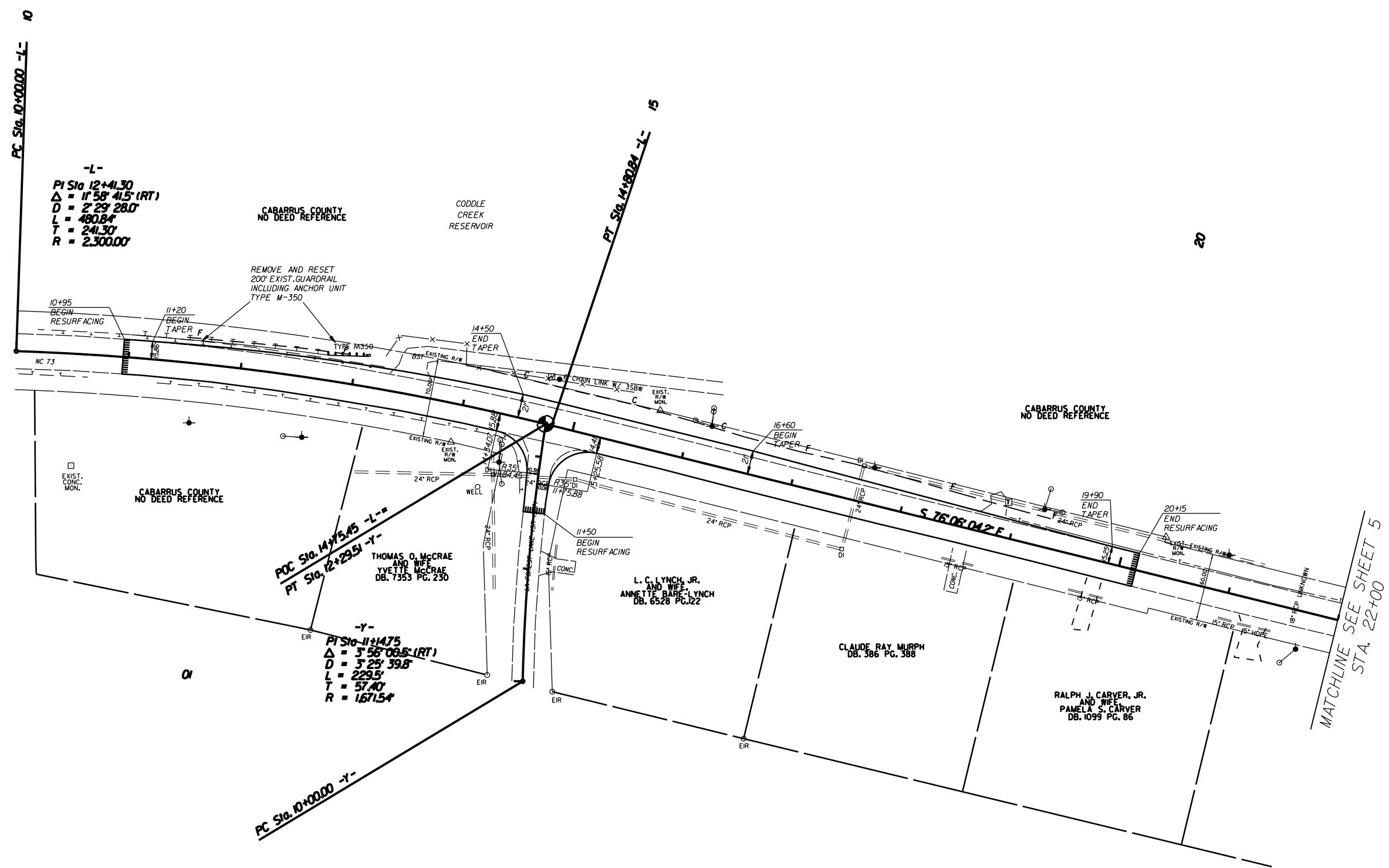
LEFT TURN LANE ON NC 73 ONTO
LA FOREST LN.(SR-1507) AND
CONC.ISLAND ON NC 73 AT
RIDING TRAIL LN.(SR-1529)

SCALE	r=50'
DATE	3-2015
DWG. BY	JDH
DESIGN BY	JDH
APPROVED	RWB



REVISIONS	

STATE	PROJECT NO.	SHEET NO.	TOTAL SHEETS
N.C.	45340.310	4	
F.A. PROJECT NO.			

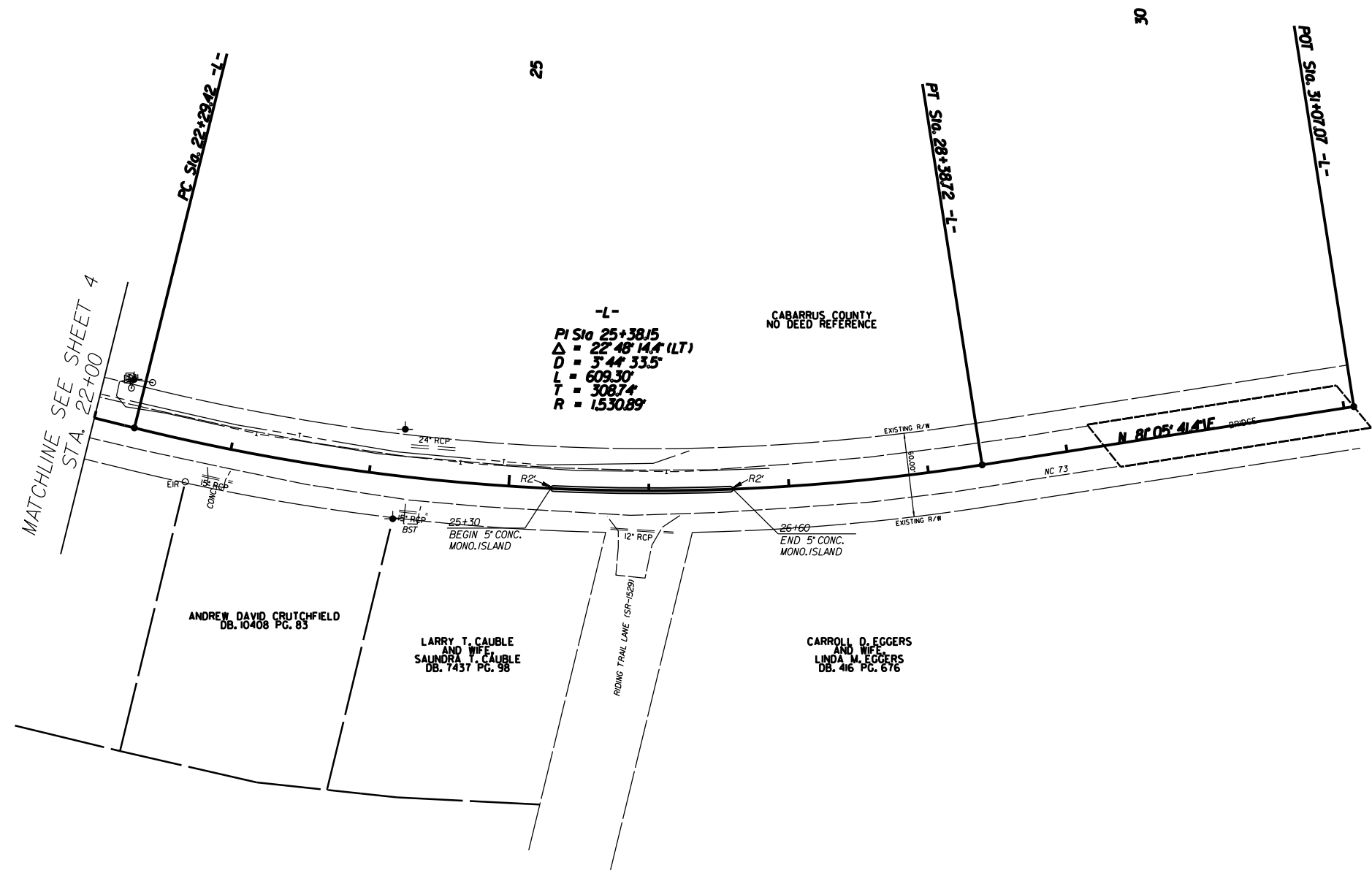


LEFT TURN LANE ON NC 73 ONTO
 LA FOREST LN.(SR-1507) AND
 CONC.ISLAND ON NC 73 AT
 RIDING TRAIL LN.(SR-1529)

SCALE	1"=50'		REVISIONS
DATE	3-2015		
DWG. BY	JDH		
DESIGN BY	JDH		
APPROVED	RWB		



STATE	PROJECT NO.	SHEET NO.	TOTAL SHEETS
N.C.	45340.310	5	
F.A. PROJECT NO.			



LEFT TURN LANE ON NC 73 ONTO
LA FOREST LN.(SR-1507) AND
CONC.ISLAND ON NC 73 AT
RIDING TRAIL LN.(SR-1529)

SCALE	1"=50'
DATE	3-2015
DWG. BY	JDH
DESIGN BY	JDH
APPROVED	RWB



REVISIONS	

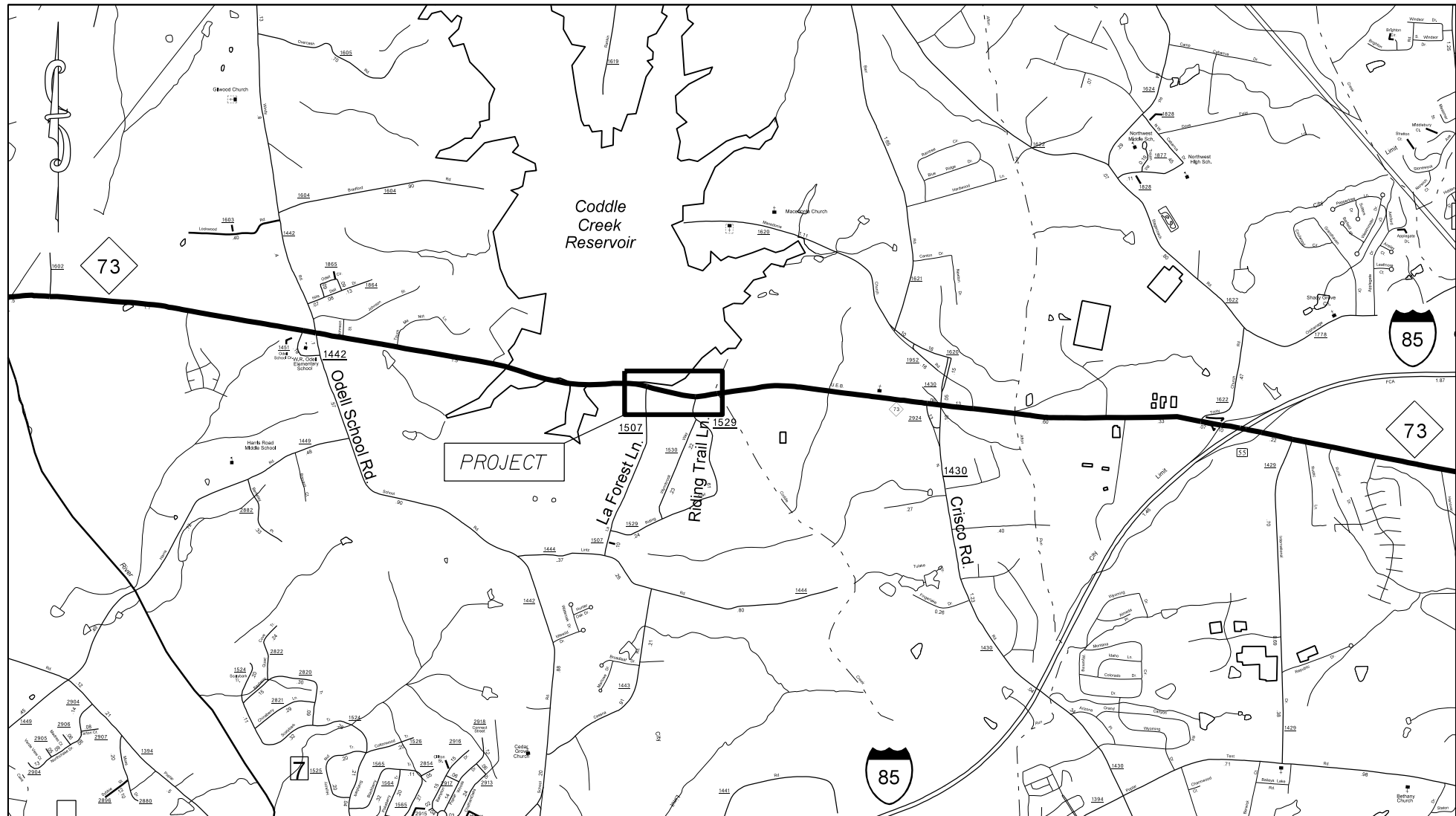
STATE	STATE PROJECT REFERENCE NO.	SHEET NO.	TOTAL SHEETS
N.C.	W-5210J	EC-1	
STATE PROJ. NO.	F.A. PROJ. NO.	DESCRIPTION	

STATE OF NORTH CAROLINA
 DIVISION OF HIGHWAYS
 PLAN FOR PROPOSED
 HIGHWAY EROSION CONTROL

EROSION AND SEDIMENT CONTROL MEASURES

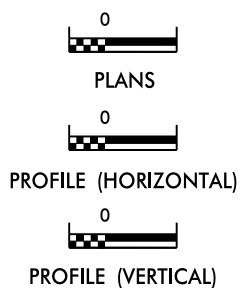
Std. #	Description	Symbol
1630.05	Temporary Silt Ditch	
1630.05	Temporary Diversion	
1605.01	Temporary Silt Fence	
1606.01	Special Sediment Control Fence	
1622.01	Temporary Berms and Slope Drains	
1630.02	Silt Basin Type B	
1633.01	Temporary Rock Silt Check Type-A	
	Temporary Rock Silt Check Type-A with Matting and Polyacrylamide (PAM)	
1633.02	Temporary Rock Silt Check Type-B	
	Wattle / Coir Fiber Wattle	
	Wattle / Coir Fiber Wattle with Polyacrylamide (PAM)	
1634.01	Temporary Rock Sediment Dam Type-A	
1634.02	Temporary Rock Sediment Dam Type-B	
1635.01	Rock Pipe Inlet Sediment Trap Type-A	
1635.02	Rock Pipe Inlet Sediment Trap Type-B	
1630.04	Stilling Basin	
1630.06	Special Stilling Basin	
	Rock Inlet Sediment Trap:	
1632.01	Type A	
1632.02	Type B	
1632.03	Type C	
	Skimmer Basin	
	Tiered Skimmer Basin	
	Infiltration Basin	

THIS PROJECT CONTAINS
 EROSION CONTROL PLANS
 FOR CLEARING AND
 GRUBBING PHASE OF
 CONSTRUCTION.



PROJECT: 45340.3.10 TIP: W-5210J

GRAPHIC SCALE



ROADSIDE ENVIRONMENTAL UNIT
 DIVISION OF HIGHWAYS
 STATE OF NORTH CAROLINA

THESE EROSION AND SEDIMENT CONTROL PLANS COMPLY
 WITH THE REGULATIONS SET FORTH BY THE
 NCG-010000 GENERAL CONSTRUCTION PERMIT EFFECTIVE AUGUST 3, 2011
 ISSUED BY THE NORTH CAROLINA DEPARTMENT OF ENVIRONMENT AND
 NATURAL RESOURCES DIVISION OF WATER QUALITY.

Prepared in the Office of:
DDC UNIT DIVISION 10
 DEPARTMENT OF TRANSPORTATION
 DIVISION OF HIGHWAYS
2012 STANDARD SPECIFICATIONS

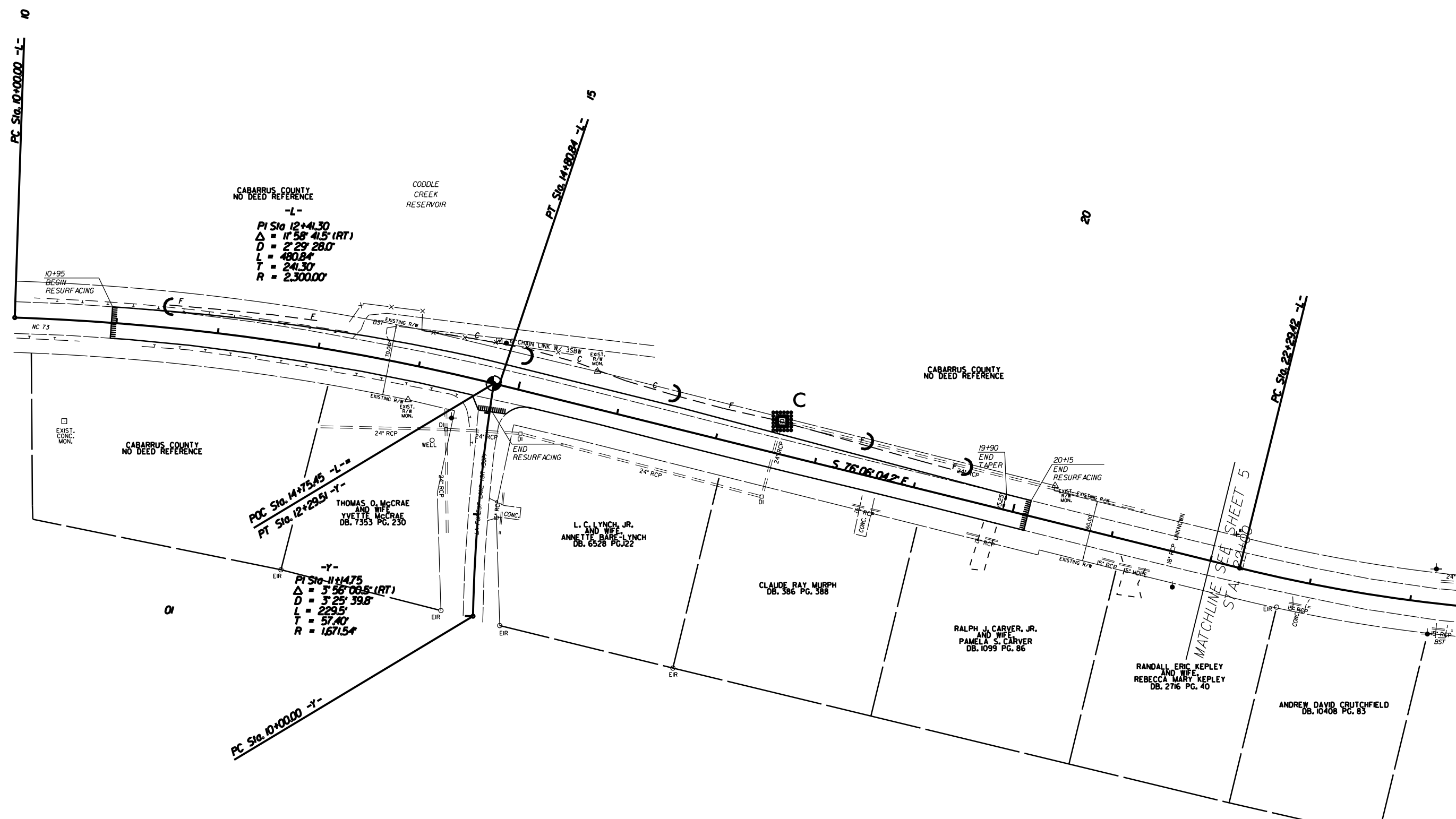
DONALD HARWARD 3028
 EROSION CONTROL DESIGNER LEVEL III-A CERTIFICATION #

Roadway Standard Drawings

The following roadway english standards as appear in "Roadway Standard Drawings"- Roadway Design Unit - N. C. Department of Transportation - Raleigh, N. C., dated January 2012 and the latest revision thereto are applicable to this project and by reference hereby are considered a part of these plans.

1604.01 Railroad Erosion Control Detail	1632.01 Rock Inlet Sediment Trap Type A
1605.01 Temporary Silt Fence	1632.02 Rock Inlet Sediment Trap Type B
1606.01 Special Sediment Control Fence	1632.03 Rock Inlet Sediment Trap Type C
1607.01 Gravel Construction Entrance	1633.01 Temporary Rock Silt Check Type A
1622.01 Temporary Berms and Slope Drains	1633.02 Temporary Rock Silt Check Type B
1630.01 Riser Basin	1634.01 Temporary Rock Sediment Dam Type A
1630.02 Silt Basin Type B	1634.02 Temporary Rock Sediment Dam Type B
1630.03 Temporary Silt Ditch	1635.01 Rock Pipe Inlet Sediment Trap Type A
1630.04 Stilling Basin	1635.02 Rock Pipe Inlet Sediment Trap Type B
1630.05 Temporary Diversion	1640.01 Coir Fiber Baffle
1630.06 Special Stilling Basin	1645.01 Temporary Stream Crossing
1631.01 Matting Installation	

STATE	PROJECT NO.	SHEET NO.	TOTAL SHEETS
N.C.	45340.310	EC-2	
F.A. PROJECT NO.			



EROSION CONTROL MEASURES MAY BE CHANGED,
IN FIELD AS DIRECTED BY THE ENGINEER.

LEFT TURN LANE ON NC 73 ONTO
LA FOREST LN.(SR-1507) AND
CONC.ISLAND ON NC 73 AT
RIDING TRAIL LN.(SR-1529)

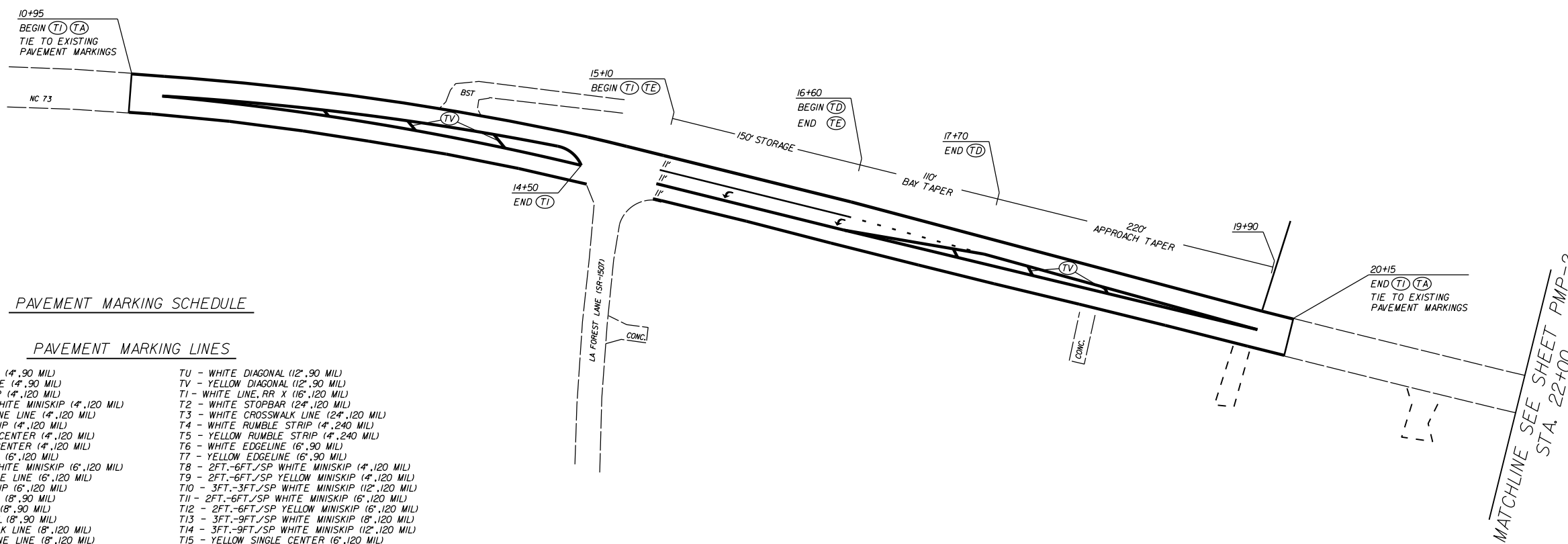
SCALE	1"=50'
DATE	3-2015
DWG. BY	JDH
DESIGN BY	JDH
APPROVED	RWB



REVISIONS	



STATE	PROJECT NO.	SHEET NO.	TOTAL SHEETS
N.C.	45340.3JO	PMP-1	
F.A. PROJECT NO.			



PAVEMENT MARKING SCHEDULE

PAVEMENT MARKING LINES

- | | |
|--|---|
| TA - WHITE EDGELINE (4',.90 MIL) | TU - WHITE DIAGONAL (12',.90 MIL) |
| TB - YELLOW EDGELINE (4',.90 MIL) | TV - YELLOW DIAGONAL (12',.90 MIL) |
| TC - 10FT. WHITE SKIP (4',.120 MIL) | T1 - WHITE LINE, RR X (16',.120 MIL) |
| TD - 3FT.-9FT./SP WHITE MINISKIP (4',.120 MIL) | T2 - WHITE STOPBAR (24',.120 MIL) |
| TE - WHITE SOLID LANE LINE (4',.120 MIL) | T3 - WHITE CROSSWALK LINE (24',.120 MIL) |
| TF - 10FT. YELLOW SKIP (4',.120 MIL) | T4 - WHITE RUMBLE STRIP (4',.240 MIL) |
| TH - YELLOW SINGLE CENTER (4',.120 MIL) | T5 - YELLOW RUMBLE STRIP (4',.240 MIL) |
| TI - YELLOW DOUBLE CENTER (4',.120 MIL) | T6 - WHITE EDGELINE (6',.90 MIL) |
| TJ - 10FT. WHITE SKIP (6',.120 MIL) | T7 - YELLOW EDGELINE (6',.90 MIL) |
| TK - 3FT.-9FT./SP WHITE MINISKIP (6',.120 MIL) | T8 - 2FT.-6FT./SP WHITE MINISKIP (4',.120 MIL) |
| TL - WHITE SOLID LANE LINE (6',.120 MIL) | T9 - 2FT.-6FT./SP YELLOW MINISKIP (4',.120 MIL) |
| TM - 10FT. YELLOW SKIP (6',.120 MIL) | T10 - 3FT.-3FT./SP WHITE MINISKIP (12',.120 MIL) |
| TN - WHITE GORELINE (8',.90 MIL) | T11 - 2FT.-6FT./SP WHITE MINISKIP (6',.120 MIL) |
| TO - WHITE DIAGONAL (8',.90 MIL) | T12 - 2FT.-6FT./SP YELLOW MINISKIP (6',.120 MIL) |
| TP - YELLOW DIAGONAL (8',.90 MIL) | T13 - 3FT.-9FT./SP WHITE MINISKIP (8',.120 MIL) |
| TQ - WHITE CROSSWALK LINE (8',.120 MIL) | T14 - 3FT.-9FT./SP WHITE MINISKIP (12',.120 MIL) |
| TR - WHITE SOLID LANE LINE (8',.120 MIL) | T15 - YELLOW SINGLE CENTER (6',.120 MIL) |
| TS - WHITE GORELINE (12',.90 MIL) | T16 - YELLOW DOUBLE CENTER (6',.120 MIL) |
| TT - WHITE SOLID LANE LINE (12',.120 MIL) | T17 - 3FT.-3FT./SP WHITE MINISKIP ENTRANCE LINE (8',.120 MIL) |

PAVEMENT MARKING SYMBOLS

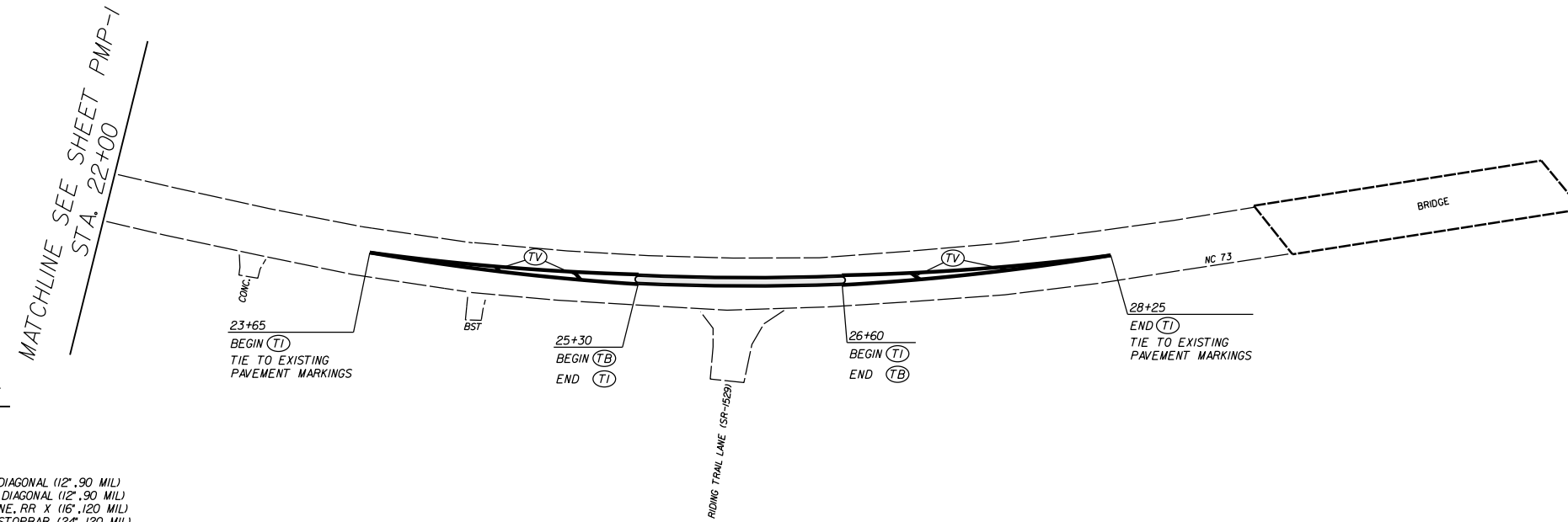
- | | |
|--|--|
| UA - LEFT TURN ARROW (90 MIL) | UU - FISH-HOOK STRAIGHT ARROW (90 MIL) |
| UB - RIGHT TURN ARROW (90 MIL) | UV - FISH-HOOK LEFT/STRAIGHT ARROW (90 MIL) |
| UC - STRAIGHT ARROW (90 MIL) | UW - FISH-HOOK RIGHT/STRAIGHT ARROW (90 MIL) |
| UD - COMBO. LEFT/STRAIGHT ARROW (90 MIL) | UX - FISH-HOOK LEFT/RIGHT ARROW (90 MIL) |
| UE - COMBO. RIGHT/STRAIGHT ARROW (90 MIL) | UY - FISH-HOOK LEFT/RIGHT/STRAIGHT ARROW (90 MIL) |
| UF - COMBO. LEFT/RIGHT ARROW (90 MIL) | UZ - FISH-HOOK W/CIRCLE STRAIGHT ARROW (90 MIL) |
| UG - COMBO. LEFT/RIGHT/STRAIGHT ARROW (90 MIL) | |
| UH - HANDICAP PARKING (90 MIL) | WA - FISH-HOOK W/CIRCLE LEFT ARROW (90 MIL) |
| UI - ALPHANUMERIC CHAR. (120 MIL) | WB - FISH-HOOK W/CIRCLE LEFT/STRAIGHT ARROW (90 MIL) |
| UJ - BICYCLE SYMBOL (90 MIL) | WC - FISH-HOOK W/CIRCLE LEFT/RIGHT/STRAIGHT ARROW (90 MIL) |
| UK - BICYCLE STRAIGHT ARROW (90 MIL) | |
| UL - BICYCLE CHAR. (120 MIL) | MA - PERMANENT RAISED MARKER (YELLOW & YELLOW) |
| UM - 12" YIELD LINE TRIANGLE (90 MIL) | MB - PERMANENT RAISED MARKER (CRYSTAL & RED) |
| UN - 24" YIELD LINE TRIANGLE (90 MIL) | MC - PERMANENT RAISED MARKER (YELLOW & RED) |
| UO - BICYCLE LEFT ARROW (90 MIL) | MD - PERMANENT RAISED MARKER (YELLOW) |
| UP - MERGE ARROW (90 MIL) | ME - SNOWFLOWABLE MARKER (YELLOW & YELLOW) |
| UQ - RAMP ARROW SYMBOL (90 MIL) | MF - SNOWFLOWABLE MARKER (CRYSTAL & RED) |
| UR - SHARROW (90 MIL) | MG - SNOWFLOWABLE MARKER (YELLOW & RED) |
| US - BICYCLE LOOP DETECTOR (90 MIL) | ML - PERMANENT RAISED MARKER (CRYSTAL & CRYSTAL) |
| UT - U-TURN ARROW (90 MIL) | MO - SNOWFLOWABLE MARKER (CRYSTAL & CRYSTAL) |

MATCHLINE SEE SHEET PMP-2
STA. 22+00

LEFT TURN LANE ON NC 73 ONTO
LA FOREST LN.(SR-1507) AND
CONC.ISLAND ON NC 73 AT
RIDING TRAIL LN.(SR-1529)

SCALE	1"=50'		REVISIONS
DATE	3-2015		
DWG. BY	JDH		
DESIGN BY	JDH		
APPROVED	RWB		

STATE	PROJECT NO.	SHEET NO.	TOTAL SHEETS
N.C.	45340.3JO	PMP-2	
F.A. PROJECT NO.			



PAVEMENT MARKING SCHEDULE

PAVEMENT MARKING LINES

- | | |
|---|---|
| TA - WHITE EDGE LINE (4',.90 MIL) | TU - WHITE DIAGONAL (12',.90 MIL) |
| TB - YELLOW EDGE LINE (4',.90 MIL) | TV - YELLOW DIAGONAL (12',.90 MIL) |
| TC - 10FT. WHITE SKIP (4',.120 MIL) | TI - WHITE LINE, RR X (16',.120 MIL) |
| TD - 3FT.-9FT./SP WHITE MINISKIP (4',.120 MIL) | T2 - WHITE STOPBAR (24',.120 MIL) |
| TE - WHITE SOLID LANE LINE (4',.120 MIL) | T3 - WHITE CROSSWALK LINE (24',.120 MIL) |
| TF - 10FT. YELLOW SKIP (4',.120 MIL) | T4 - WHITE RUMBLE STRIP (4",.240 MIL) |
| TH - YELLOW SINGLE CENTER (4',.120 MIL) | T5 - YELLOW RUMBLE STRIP (4",.240 MIL) |
| TI - YELLOW DOUBLE CENTER (4',.120 MIL) | T6 - WHITE EDGE LINE (16',.90 MIL) |
| TJ - 10FT. WHITE SKIP (16',.120 MIL) | TT - YELLOW EDGE LINE (16',.90 MIL) |
| TK - 3FT.-9FT./SP WHITE MINISKIP (16',.120 MIL) | T8 - 2FT.-6FT./SP WHITE MINISKIP (4',.120 MIL) |
| TL - WHITE SOLID LANE LINE (16',.120 MIL) | T9 - 2FT.-6FT./SP YELLOW MINISKIP (4',.120 MIL) |
| TM - 10FT. YELLOW SKIP (16',.120 MIL) | T10 - 3FT.-3FT./SP WHITE MINISKIP (12',.120 MIL) |
| TN - WHITE GORELINE (8',.90 MIL) | T11 - 2FT.-6FT./SP WHITE MINISKIP (16',.120 MIL) |
| TO - WHITE DIAGONAL (8',.90 MIL) | T12 - 2FT.-6FT./SP YELLOW MINISKIP (16',.120 MIL) |
| TP - YELLOW DIAGONAL (8',.90 MIL) | T13 - 3FT.-9FT./SP WHITE MINISKIP (8',.120 MIL) |
| TQ - WHITE CROSSWALK LINE (8',.120 MIL) | T14 - 3FT.-9FT./SP WHITE MINISKIP (12',.120 MIL) |
| TR - WHITE SOLID LANE LINE (8',.120 MIL) | T15 - YELLOW SINGLE CENTER (16',.120 MIL) |
| TS - WHITE GORELINE (12',.90 MIL) | T16 - YELLOW DOUBLE CENTER (16',.120 MIL) |
| TT - WHITE SOLID LANE LINE (12',.120 MIL) | T17 - 3FT.-3FT./SP WHITE MINISKIP ENTRANCE LINE (8',.120 MIL) |

PAVEMENT MARKING SYMBOLS

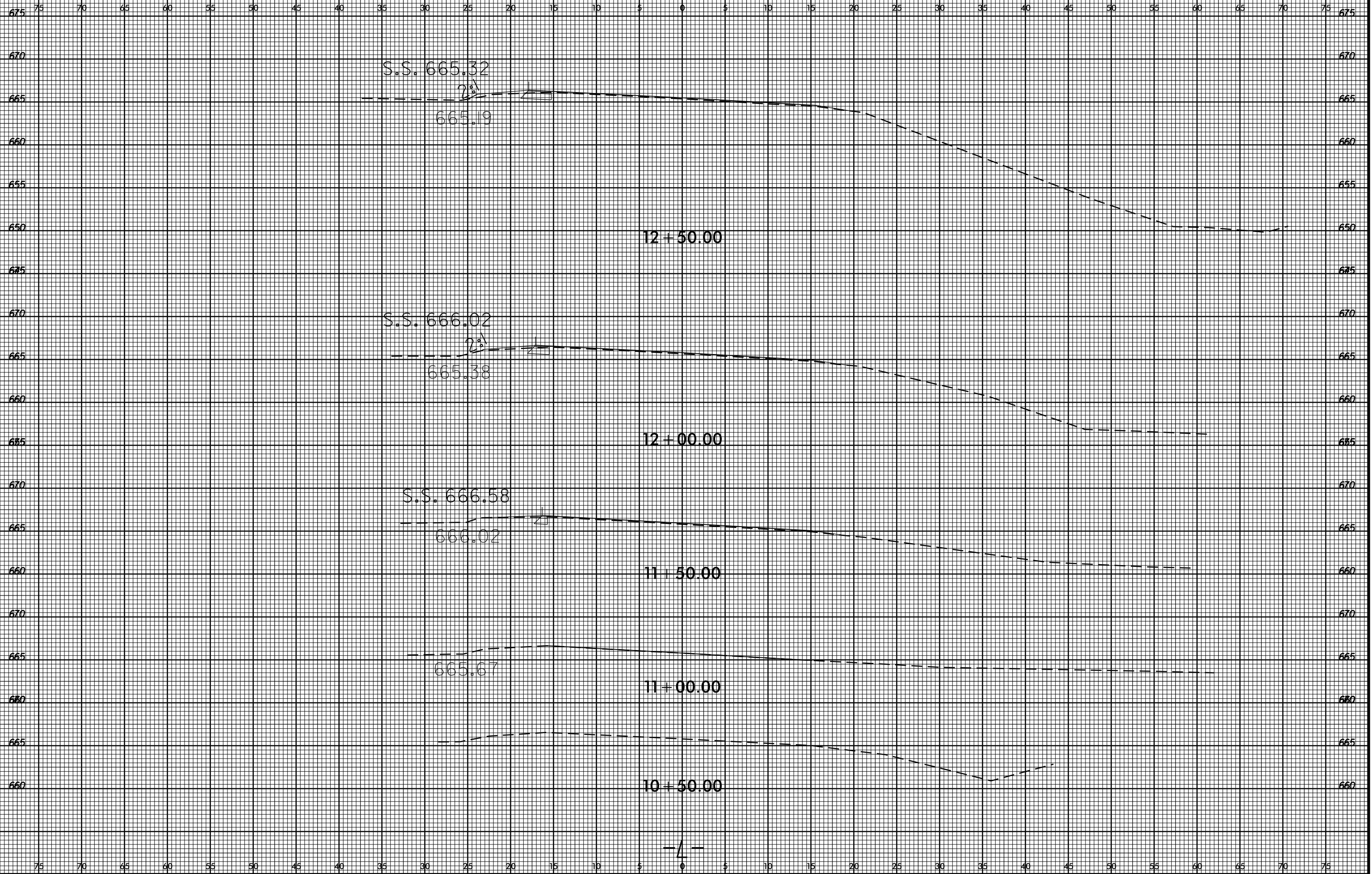
- | | |
|--|--|
| UA - LEFT TURN ARROW (90 MIL) | UU - FISH-HOOK STRAIGHT ARROW (90 MIL) |
| UB - RIGHT TURN ARROW (90 MIL) | UV - FISH-HOOK LEFT/STRAIGHT ARROW (90 MIL) |
| UC - STRAIGHT ARROW (90 MIL) | UW - FISH-HOOK RIGHT/STRAIGHT ARROW (90 MIL) |
| UD - COMBO. LEFT/STRAIGHT ARROW (90 MIL) | UX - FISH-HOOK LEFT/RIGHT ARROW (90 MIL) |
| UE - COMBO. RIGHT/STRAIGHT ARROW (90 MIL) | UY - FISH-HOOK LEFT/RIGHT/STRAIGHT ARROW (90 MIL) |
| UF - COMBO. LEFT/RIGHT ARROW (90 MIL) | UZ - FISH-HOOK W/CIRCLE STRAIGHT ARROW (90 MIL) |
| UG - COMBO. LEFT/RIGHT/STRAIGHT ARROW (90 MIL) | WA - FISH-HOOK W/CIRCLE LEFT ARROW (90 MIL) |
| UH - HANDICAP PARKING (90 MIL) | WB - FISH-HOOK W/CIRCLE LEFT/STRAIGHT ARROW (90 MIL) |
| UI - ALPHANUMERIC CHAR. (120 MIL) | WC - FISH-HOOK W/CIRCLE LEFT/RIGHT/STRAIGHT ARROW (90 MIL) |
| UJ - BICYCLE SYMBOL (90 MIL) | |
| UK - BICYCLE STRAIGHT ARROW (90 MIL) | MA - PERMANENT RAISED MARKER (YELLOW & YELLOW) |
| UL - BICYCLE CHAR. (120 MIL) | MB - PERMANENT RAISED MARKER (CRYSTAL & RED) |
| UM - 12" YIELD LINE TRIANGLE (90 MIL) | MC - PERMANENT RAISED MARKER (YELLOW & RED) |
| UN - 24" YIELD LINE TRIANGLE (90 MIL) | MD - PERMANENT RAISED MARKER (YELLOW) |
| UO - BICYCLE LEFT ARROW (90 MIL) | ME - SNOWPLOWABLE MARKER (YELLOW & YELLOW) |
| UP - MERGE ARROW (90 MIL) | MF - SNOWPLOWABLE MARKER (CRYSTAL & RED) |
| UQ - RAMP ARROW SYMBOL (90 MIL) | MG - SNOWPLOWABLE MARKER (YELLOW & RED) |
| UR - SHARROW (90 MIL) | ML - PERMANENT RAISED MARKER (CRYSTAL & CRYSTAL) |
| US - BICYCLE LOOP DETECTOR (90 MIL) | MO - SNOWPLOWABLE MARKER (CRYSTAL & CRYSTAL) |
| UT - U-TURN ARROW (90 MIL) | |

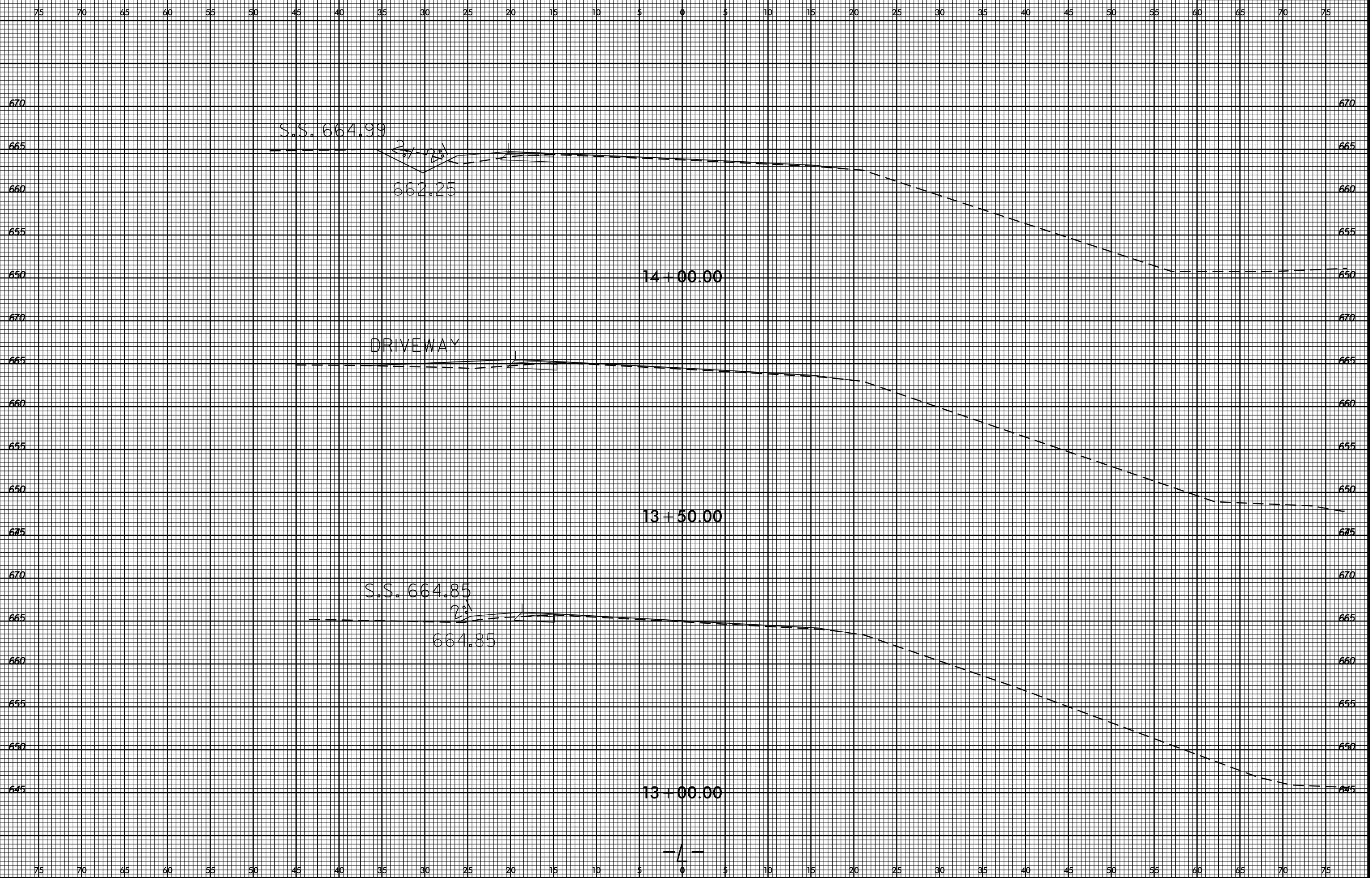
LEFT TURN LANE ON NC 73 ONTO
LA FOREST LN.(SR-1507) AND
CONC.ISLAND ON NC 73 AT
RIDING TRAIL LN.(SR-1529)

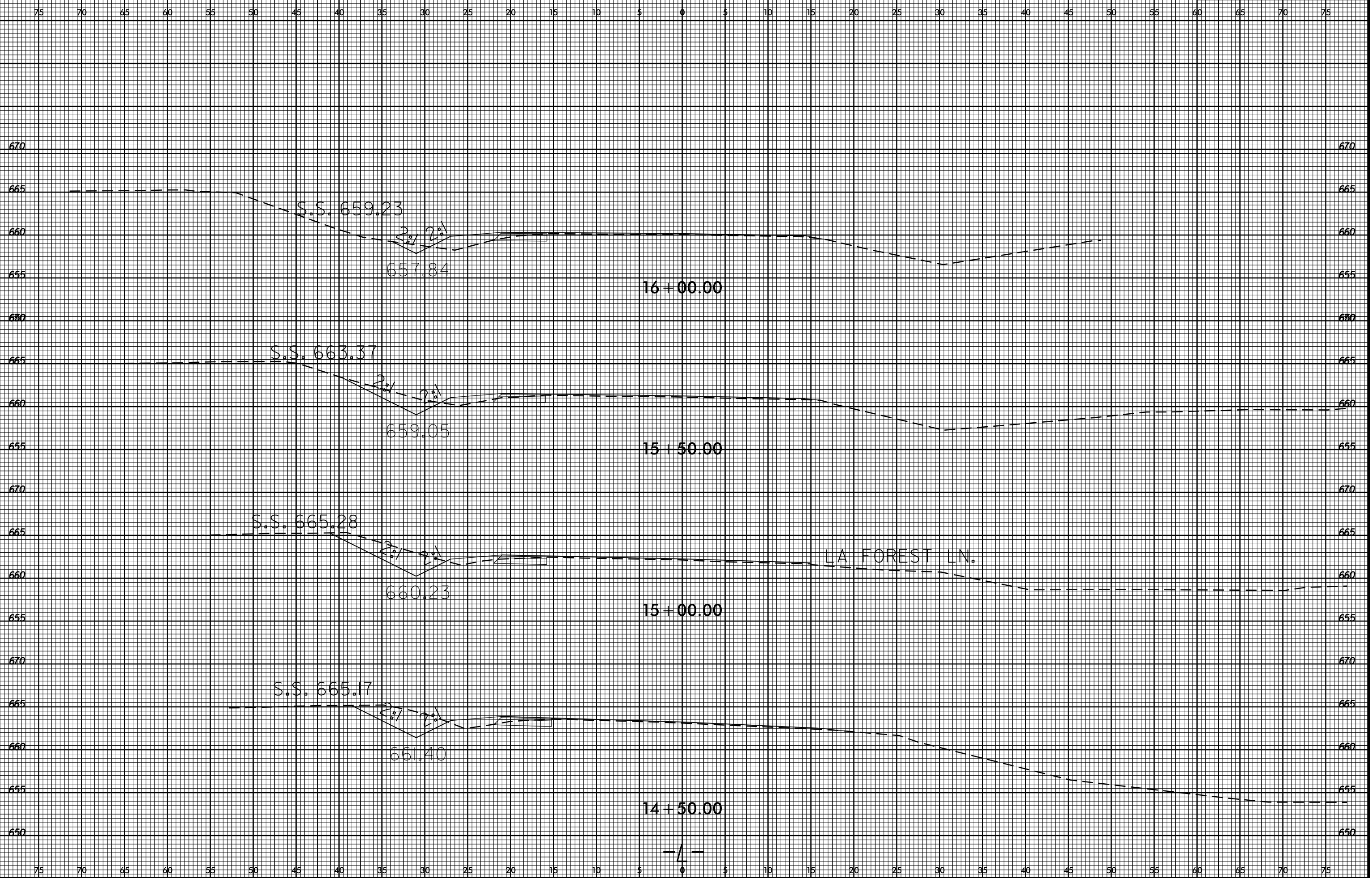
SCALE	r=50'
DATE	3-2015
DWG. BY	JDH
DESIGN BY	JDH
APPROVED	RWB

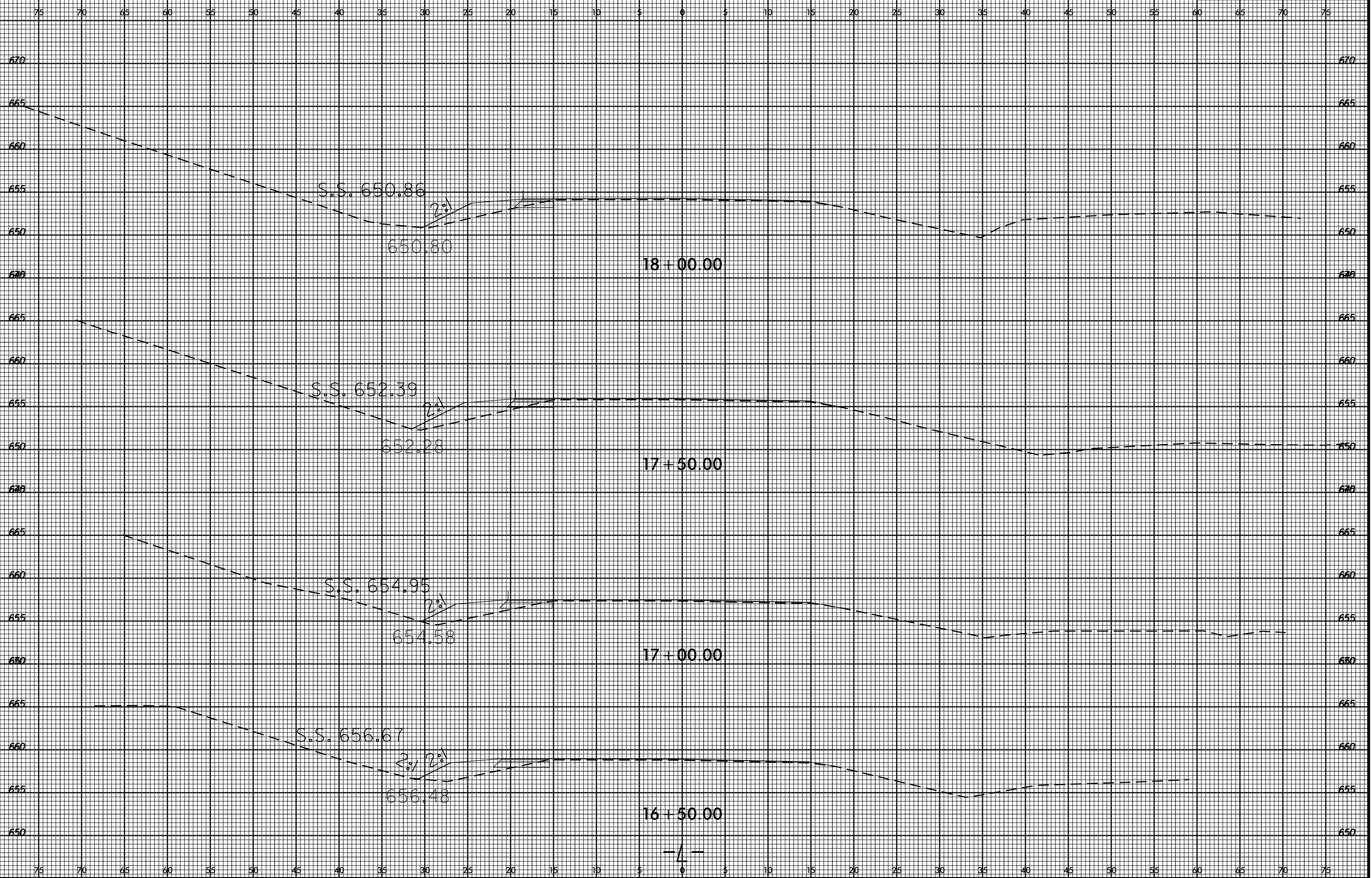


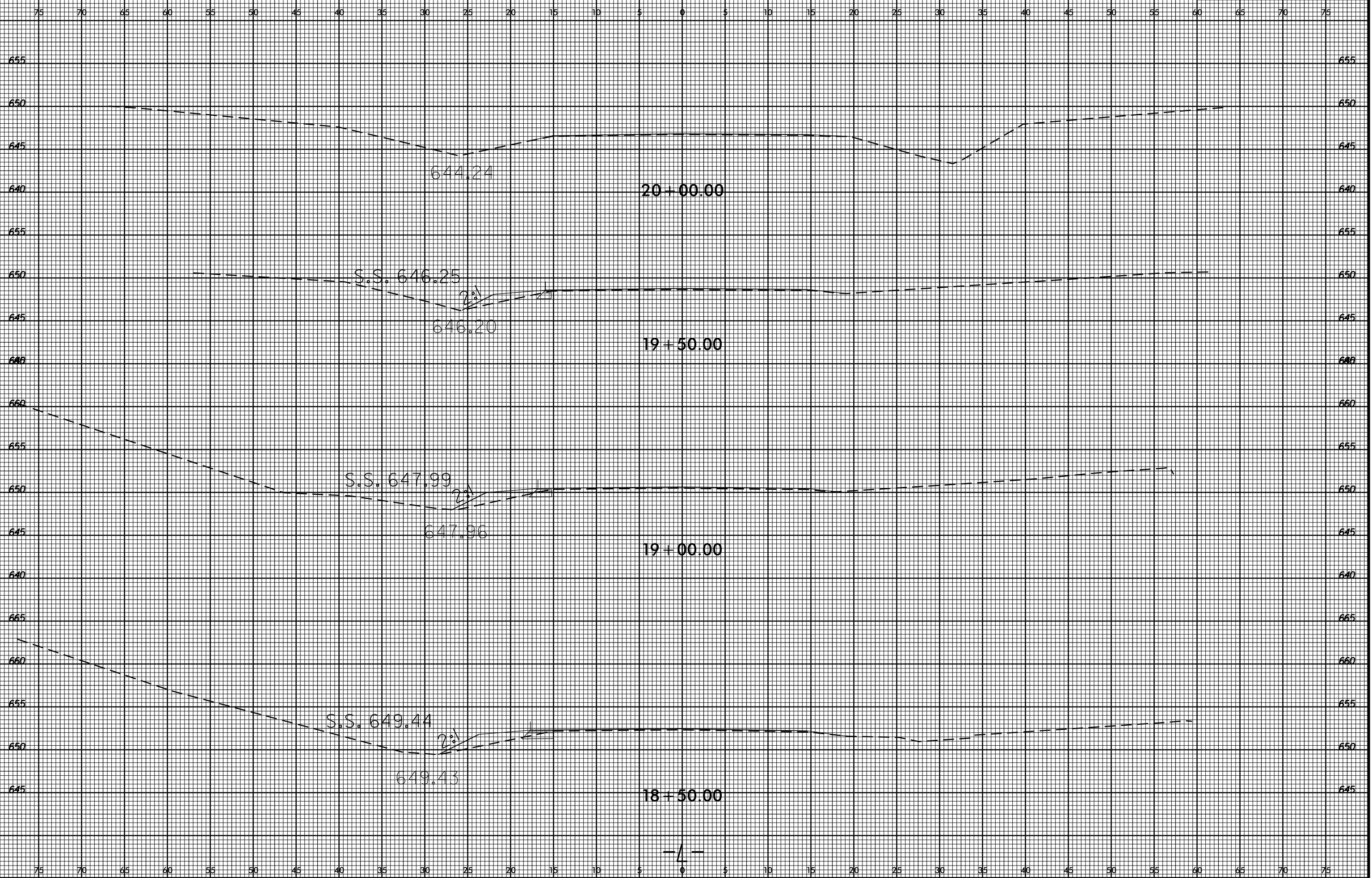
REVISIONS	











05-AUG-2015 15:06
S:\DDC\BOY_Caportrus\NC73_Bridges\trail\le Forest\XSC\nc73_riding trail\leforest.ce2.xpl.L.dgn
idharward AT D:\DDIV\CAD\277126